



DT3-01

BEST  
SELLER

**Your advantages**

Series	DT3-01 / DT3-02 / DT3-10 / DT3-20 / DT3-30
	<ul style="list-style-type: none"> <li>• Intuitive recognition of process parameters and trends → Dual display unit</li> <li>• Robust mechanical construction → Reliable and long-lasting operation</li> <li>• Optional integrable transmitters → Simple integration into process control system</li> <li>• Simple signalling of critical operating states → Freely programmable switching contacts</li> <li>• Up to 10 years of energy self-sufficient operation → Durable lithium battery</li> </ul>

Technical data	
Version	Straight
Dimensions	80 mm x 45 mm (D x D)
Measuring range	-40...300 °C
Medium / Application	Liquid and gaseous media
Immersion tube length	100...400 mm
Immersion tube diameter	6 or 8 mm
Process connection	Without, G1/4, G1/2, G3/4, M20 x 1.5, M27 x 2
Pressure rating	PN 25
Display	Bar graph 17 divisions 3 1/2 digit, 7 segment LCD, 14 mm high
Resolution	0,1 K in the range <200 °C 1 K in the range >200 °C
Measuring rate	3 s
Medium temperature	See selected measuring range
Ambient temperature	5...60 °C
Storage temperature	5...60 °C
Degree of protection EN 60529	IP65

Electrical data	
Measuring element	Pt1000 / 2-wire / Class B
Accuracy	±1 % of range ±1 digit
Electrical connection	4-pin plug connector M12 x 1
Supply voltage	Lithium battery, 10 years service life (display unit)
Analogue output	
Current signal	4...20 mA / 2-wire (loop supply 15...26 VDC)
Scaling	Measuring range
Signal error	Error signal according to NAMUR NE43
Burden	Max. 500 Ω
Alarm output	
Quantity	2 x normally open contact
Version	Solid-state relay
Voltage	24 VAC/DC
Output current / switching current	Max. 100 mA
Switching point	Programmable
Hysteresis	Programmable
Alarm delay	0...999.9 s programmable

Архангельск (8182)63-90-72  
Астана (7172)727-132  
Астрахань (8512)99-46-04  
Барнаул (3852)73-04-60  
Белгород (4722)40-23-64  
Брянск (4832)59-03-52  
Владивосток (423)249-28-31  
Волгоград (844)278-03-48  
Вологда (8172)26-41-59  
Воронеж (473)204-51-73  
Екатеринбург (343)384-55-89  
Иваново (4932)77-34-06

Ижевск (3412)26-03-58  
Иркутск (395)279-98-46  
Казань (843)206-01-48  
Калининград (4012)72-03-81  
Калуга (4842)92-23-67  
Кемерово (3842)65-04-62  
Киров (8332)68-02-04  
Краснодар (861)203-40-90  
Красноярск (391)204-63-61  
Курск (4712)77-13-04  
Липецк (4742)52-20-81  
Киргизия (996)312-96-26-47

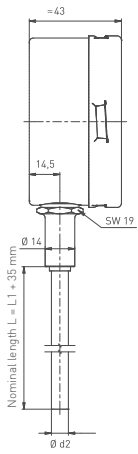
Магнитогорск (3519)55-03-13  
Москва (495)268-04-70  
Мурманск (8152)59-64-93  
Набережные Челны (8552)20-53-41  
Нижний Новгород (831)429-08-12  
Новокузнецк (3843)20-46-81  
Новосибирск (383)227-86-73  
Омск (3812)21-46-40  
Орел (4862)44-53-42  
Оренбург (3532)37-68-04  
Пенза (8412)22-31-16  
Казахстан (772)734-952-31

Пермь (342)205-81-47  
Ростов-на-Дону (863)308-18-15  
Рязань (4912)46-61-64  
Самара (846)206-03-16  
Санкт-Петербург (812)309-46-40  
Саратов (845)249-38-78  
Севастополь (8692)22-31-93  
Симферополь (3652)67-13-56  
Смоленск (4812)29-41-54  
Сочи (862)225-72-31  
Ставрополь (8652)20-65-13  
Таджикистан (992)427-82-92-69

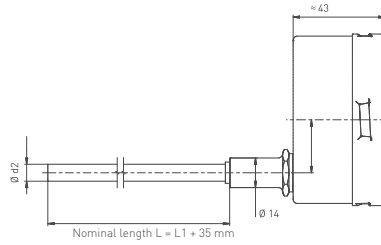
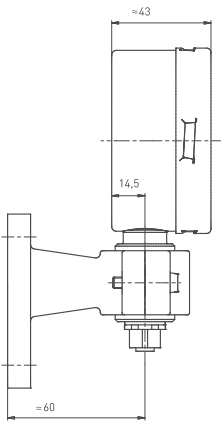
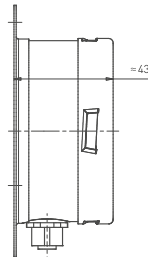
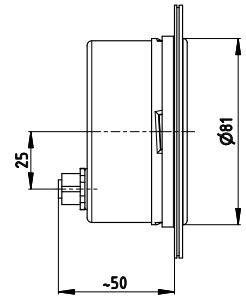
Сургут (3462)77-98-35  
Тверь (4822)63-31-35  
Томск (3822)98-41-53  
Тула (4872)74-02-29  
Тюмень (3452)66-21-18  
Ульяновск (8422)24-23-59  
Уфа (347)229-48-12  
Хабаровск (4212)92-98-04  
Челябинск (351)202-03-61  
Череповец (8202)49-02-64  
Ярославль (4852)69-52-93

**DT3-01**

Immersion tube routed downwards (vertical)

**DT3-02**

Immersion tube routed to the rear (axial)

**DT3-10**M12 socket at bottom  
with wall holder**DT3-20**M12 socket at bottom  
mounting flange at rear**DT3-30**M12 socket at rear  
mounting flange at front**Material****Not in contact with medium**

<b>Housing</b>	Stainless steel 1.4301 with polished front frame, glass or plastic front screen
----------------	---

**In contact with medium**

<b>Process connection</b>	Stainless steel 1.4571
---------------------------	------------------------

<b>Immersion tube</b>	Stainless steel 1.4571
-----------------------	------------------------

Order code										
<b>Type</b>										
Immersion tube routed downwards (vertical)	DT3-01	961								
Immersion tube routed to the rear (axial)	DT3-02	962								
M12 socket at bottom with wall holder	DT3-10	970								
M12 socket at bottom mounting flange at rear	DT3-20	980								
M12 socket at rear mounting flange at front	DT3-30	990								
<b>Display range*</b>										
-40...80 °C		48								
0...120 °C		12								
0...160 °C		16								
0...200 °C		20								
0...300 °C		30								
<b>Immersion tube length* l<sub>1</sub></b>		<b>Nominal length L = l<sub>1</sub> + 35 mm</b>								
100 mm		135 mm		100						
160 mm		195 mm		160						
250 mm		285 mm		250						
400 mm		435 mm		400						
<b>Connection type*</b>										
Connection type A, plain immersion tube				1						
Connection type AK, adjustable compression fitting				9						
<b>Thread type*</b>										
None				0						
Connection type AKa, adjustable compression fitting (male thread)				2						
Connection type AKi, adjustable compression fitting (female thread)				3						
<b>Connection thread*</b>										
Without - plain immersion tube				0						
G $\frac{1}{4}$				L						
G $\frac{1}{2}$				2						
G $\frac{3}{4}$				3						
M20 x 1.5				7						
M27 x 2				9						
<b>Immersion tube material*</b>		<b>Connection thread material*</b>								
Stainless steel 1.4571		None				1				
Stainless steel 1.4571		Stainless steel 1.4571				3				
<b>Immersion tube diameter</b>										
8 mm						0				
6 mm						1				
<b>Connecting cable*</b>										
None								0		
Cable length 1 m**								1		
Cable length 3 m**								3		
Cable length 5 m**								5		
Cable length 10 m**								A		
<b>Special features*</b>										
None									0	
4...20 mA analog output (pre-programmed to display range)***									3	
Alarm output (freely programmable in display range)***									5	
Shatter-proof plastic front screen (FDA version)									2	
<b>Example order number</b>		<b>961</b>	<b>48</b>	<b>100</b>	<b>1</b>	<b>0</b>	<b>0</b>	<b>1</b>	<b>0</b>	<b>0</b>

\* Other specifications are available on request

\*\* DT3-10, DT3-20, DT3-30

\*\*\* Not available for DT3-20

BEST  
SELLER

Type	Order number
<b>DT3</b> Immersion tube routed to the rear (axial), display range 0...60 °C $l_1 = 100$ mm, adjustable compression fitting, thread type: none Connection thread M18 x 1,5, Stainless steel 1.4571, immersion tube diameter 8 mm, connecting cable: none, 4...20 mA analog output	<b>961 16 100 9 3 6 3 0 0 3</b>

**Архангельск** (8182)63-90-72  
**Астана** (7172)727-132  
**Астрахань** (8512)99-46-04  
**Барнаул** (3852)73-04-60  
**Белгород** (4722)40-23-64  
**Брянск** (4832)59-03-52  
**Владивосток** (423)249-28-31  
**Волгоград** (844)278-03-48  
**Вологда** (8172)26-41-59  
**Воронеж** (473)204-51-73  
**Екатеринбург** (343)384-55-89  
**Иваново** (4932)77-34-06

**Ижевск** (3412)26-03-58  
**Иркутск** (395)279-98-46  
**Казань** (843)206-01-48  
**Калининград** (4012)72-03-81  
**Калуга** (4842)92-23-67  
**Кемерово** (3842)65-04-62  
**Киров** (8332)68-02-04  
**Краснодар** (861)203-40-90  
**Красноярск** (391)204-63-61  
**Курск** (4712)77-13-04  
**Липецк** (4742)52-20-81  
**Киргизия** (996)312-96-26-47

**Магнитогорск** (3519)55-03-13  
**Москва** (495)268-04-70  
**Мурманск** (8152)59-64-93  
**Набережные Челны** (8552)20-53-41  
**Нижний Новгород** (831)429-08-12  
**Новокузнецк** (3843)20-46-81  
**Новосибирск** (383)227-86-73  
**Омск** (3812)21-46-40  
**Орел** (4862)44-53-42  
**Оренбург** (3532)37-68-04  
**Пенза** (8412)22-31-16  
**Казахстан** (772)734-952-31

**Пермь** (342)205-81-47  
**Ростов-на-Дону** (863)308-18-15  
**Рязань** (4912)46-61-64  
**Самара** (846)206-03-16  
**Санкт-Петербург** (812)309-46-40  
**Саратов** (845)249-38-78  
**Севастополь** (8692)22-31-93  
**Симферополь** (3652)67-13-56  
**Смоленск** (4812)29-41-54  
**Сочи** (862)225-72-31  
**Ставрополь** (8652)20-65-13  
**Таджикистан** (992)427-82-92-69

**Сургут** (3462)77-98-35  
**Тверь** (4822)63-31-35  
**Томск** (3822)98-41-53  
**Тула** (4872)74-02-29  
**Тюмень** (3452)66-21-18  
**Ульяновск** (8422)24-23-59  
**Уфа** (347)229-48-12  
**Хабаровск** (4212)92-98-04  
**Челябинск** (351)202-03-61  
**Череповец** (8202)49-02-64  
**Ярославль** (4852)69-52-93

<https://sika.nt-rt.ru/> || [skx@nt-rt.ru](mailto:skx@nt-rt.ru)