

Types Ei, Gi, BS1, BS2 and BS3 // For thermometers with male thread



Your advantages

Type	Ei / Gi / BS1 / BS2 / BS3
	<ul style="list-style-type: none"> • Suitable materials for your pipe system • Replacement of the measuring device possible without draining the system • Protection of the sensor against pressure and inflow • Minimizes the risk of sensor breakage during operation

Technical data

Type	Ei	Gi	BS1 / BS2 / BS3
Version	Threaded socket with tube and bottom hard soldered (non-ferrous metal) or welded (steel) to be screwed in	Made of solid material to be screwed in	Made of solid material to be welded in
Connection thread immersion tube	G½, M20 x 1.5, G¾, M27 x 2		
Medium / Application area	Liquid and gaseous media		
For protection tube length	63 mm, 100 mm, 160 mm, 250 mm and 400 mm*		
Immersion tube diameter	up to Ø 10 mm		
Process connection	Thread	Thread	for welding in
Nominal pressure	Max. 35 bar	Max. 100 bar	Max. 400 bar
Medium temperature	depending on material, pressure and flow speed		

* On request

Архангельск (8182)63-90-72
Астана (7172)727-132
Астрахань (8512)99-46-04
Барнаул (3852)73-04-60
Белгород (4722)40-23-64
Брянск (4832)59-03-52
Владивосток (423)249-28-31
Волгоград (844)278-03-48
Вологда (8172)26-41-59
Воронеж (473)204-51-73
Екатеринбург (343)384-55-89
Иваново (4932)77-34-06

Ижевск (3412)26-03-58
Иркутск (395)279-98-46
Казань (843)206-01-48
Калининград (4012)72-03-81
Калуга (4842)92-23-67
Кемерово (3842)65-04-62
Киров (8332)68-02-04
Краснодар (861)203-40-90
Красноярск (391)204-63-61
Курск (4712)77-13-04
Липецк (4742)52-20-81
Киргизия (996)312-96-26-47

Магнитогорск (3519)55-03-13
Москва (495)268-04-70
Мурманск (8152)59-64-93
Набережные Челны (8552)20-53-41
Нижний Новгород (831)429-08-12
Новокузнецк (3843)20-46-81
Новосибирск (383)227-86-73
Омск (3812)21-46-40
Орел (4862)44-53-42
Оренбург (3532)37-68-04
Пенза (8412)22-31-16
Казахстан (772)734-952-31

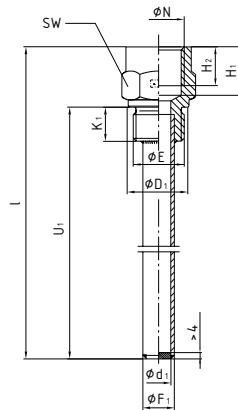
Пермь (342)205-81-47
Ростов-на-Дону (863)308-18-15
Рязань (4912)46-61-64
Самара (846)206-03-16
Санкт-Петербург (812)309-46-40
Саратов (845)249-38-78
Севастополь (8692)22-31-93
Омск (3812)21-46-40
Симферополь (3652)67-13-56
Смоленск (4812)29-41-54
Сочи (862)225-72-31
Ставрополь (8652)20-65-13
Таджикистан (992)427-82-92-69

Сургут (3462)77-98-35
Тверь (4822)63-31-35
Томск (3822)98-41-53
Тула (4872)74-02-29
Тюмень (3452)66-21-18
Ульяновск (8422)24-23-59
Уфа (347)229-48-12
Хабаровск (4212)92-98-04
Челябинск (351)202-03-61
Череповец (8202)49-02-64
Ярославль (4852)69-52-93

<https://sika.nt-rt.ru/> || skx@nt-rt.ru

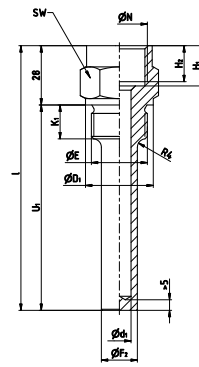
Type Ei
(DIN 43772, form 5)

Fig. 1



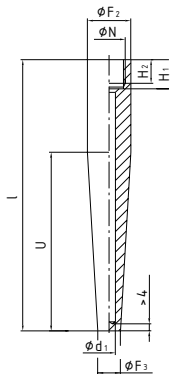
Type Gi
(DIN 43772, form 6)

Fig. 2



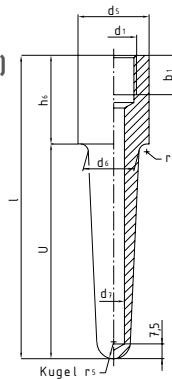
Type BS1
(DIN 43772, form 4)

Fig. 3



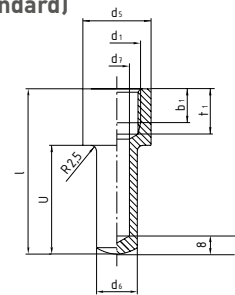
Type BS2
(SIKA factory standard)

Fig. 4



Type BS3
(SIKA factory standard)

Fig. 5



Dimensions [mm] for types Ei and BS1

Thread E / N	D ₁	H ₂	F ₂	F ₃	d ₁	F ₁	K ₁	H ₁	SW
G½	26	15	26	17	11	14	14	19	27
M20 x 1.5			h7						
G¾	32	17	32	17	11	14	16	22	32
M27 x 2			h11						

Dimensions [mm] for type Gi

Thread E / N	D ₁	H ₂	F ₂	d ₁	K ₁	H ₁	SW
G½	26	15	17	11	14	19	27
M20 x 1.5							
G¾	32	17	19	11	16	22	32
M27 x 2							

Dimensions [mm] for type BS2

Thread d ₁	d ₅	d ₆	d ₇	b ₁	h ₆	r ₂	r ₃
G½	30	25	11	16	39	2.5	8.5
M20 x 1.5	h11						
G¾	36	26	11	20	45	4	8.5
M27 x 2	h11						

Dimensions [mm] for type BS3

Thread d ₁	d ₅	d ₆	d ₇	b ₁	t ₁
G½	30	18	11	15 + 1	20
	h11				

Materials				
Type		Ei	Gi	BS1 / BS2 / BS3
Brass	CW617N	✓1)2]	✓1)	
Steel	Thread connection: 1.0718 tube: 1.0308 E235	✓1)		
	1.0718, 11SMnPb30		✓1)	
Stainless steel	1.4571, X6CrNiMo Ti17-12-2	✓1)	✓	✓
Special brass	CW702R, CuZn20Al2As	✓1)	✓1)	
Copper-nickel alloy	CW354H CuNi30Mn1Fe	✓1)	✓1)	
Steel	1.0460 P250GH (C22.8)			✓
Stainless steel	1.7335 13CrMo4-5		✓	✓
	1.7380 10CrMo9-10			✓
	1.5415 16Mo3			✓
Special brass	CW710R CuZn35Ni3Mn 2AIPb		✓	

1) Only possible with Works Certificate EN 10204-2.1 or -2.2.

2) Hexagon CW617N, tube CW702R or CW508L

Order code				
Immersion tube				
Type Ei (Fig. 1)		179.1		
Type Gi (Fig. 2)		179.3		
Type BS 1 / BS 2 / BS 3 (Fig. 3 / 4 / 5)		180.5		
Immersion length l_i	Overall length l	Immersion length U / U_i	Code	
Type Ei - tube brazed into socket for non-ferrous materials or welded for steel, to be screwed in				
63 mm	73 mm	45 mm	045	
100 mm	110 mm	82 mm	082	
160 mm	170 mm	142 mm	142	
250 mm	260 mm	232 mm	232	
400 mm*	410 mm	382 mm	382	
Type Gi - made of solid material to be screwed in				
63 mm	78 mm	50 mm	050	
100 mm	110 mm	82 mm	082	
160 mm	170 mm	142 mm	142	
250 mm	260 mm	232 mm	232	
400 mm*	410 mm	382 mm	382	
Type BS - made of solid material weld-in type				
63 mm	73 mm	48 mm	= BS3	048
100 mm	110 mm	73 mm	= BS1	073
160 mm	170 mm	133 mm	= BS1	133
250 mm	260 mm	223 mm	= BS2	223
400 mm*	410 mm	373 mm	= BS2	373
Connection thread dimension E / N				
G½				2
M20 x 1.5				7
G¾				3
M27 x 2				9
Materials for type				
Ei	Steel, connection thread 1.0718 / tube 1.0308			0
	Brass - Hexagon CW617N, tube CW702R or CW508L			1
Gi	Brass - CW617N			1
Ei, Gi, BS	Stainless steel - 1.4571			3
Ei	Special brass - connection thread CW710R / tube CW702R			4
Gi	Special brass - CW710R			15
	Copper-nickel alloy - CW354H			5
	Stainless steel - 1.7335			7
	Stainless steel - 1.7380			8
BS	Stainless steel - 1.5415			9
	Steel - 1.0460			6
Example order number		179.1	045	2
				0

* On request

Архангельск (8182)63-90-72
 Астана (7172)727-132
 Астрахань (8512)99-46-04
 Барнаул (3852)73-04-60
 Белгород (4722)40-23-64
 Брянск (4832)59-03-52
 Владивосток (423)249-28-31
 Волгоград (844)278-03-48
 Вологда (8172)26-41-59
 Воронеж (473)204-51-73
 Екатеринбург (343)384-55-89
 Иваново (4932)77-34-06

Ижевск (3412)26-03-58
 Иркутск (395)279-98-46
 Казань (843)206-01-48
 Калининград (4012)72-03-81
 Калуга (4842)92-23-67
 Кемерово (3842)65-04-62
 Киров (8332)68-02-04
 Краснодар (861)203-40-90
 Красноярск (391)204-63-61
 Курск (4712)77-13-04
 Липецк (4742)52-20-81
 Киргизия (996)312-96-26-47

Магнитогорск (3519)55-03-13
 Москва (495)268-04-70
 Мурманск (8152)59-64-93
 Набережные Челны (8552)20-53-41
 Нижний Новгород (831)429-08-12
 Новокузнецк (3843)20-46-81
 Новосибирск (383)227-86-73
 Омск (3812)21-46-40
 Орел (4862)44-53-42
 Оренбург (3532)37-68-04
 Пенза (8412)22-31-16
 Казахстан (772)734-952-31

Пермь (342)205-81-47
 Ростов-на-Дону (863)308-18-15
 Рязань (4912)46-61-64
 Самара (846)206-03-16
 Санкт-Петербург (812)309-46-40
 Саратов (845)249-38-78
 Севастополь (8692)22-31-93
 Симферополь (3652)67-13-56
 Смоленск (4812)29-41-54
 Сочи (862)225-72-31
 Ставрополь (8652)20-65-13
 Таджикистан (992)427-82-92-69

Сургут (3462)77-98-35
 Тверь (4822)63-31-35
 Томск (3822)98-41-53
 Тула (4872)74-02-29
 Тюмень (3452)66-21-18
 Ульяновск (8422)24-23-59
 Уфа (347)229-48-12
 Хабаровск (4212)92-98-04
 Челябинск (351)202-03-61
 Череповец (8202)49-02-64
 Ярославль (4852)69-52-93

<https://sika.nt-rt.ru/> || skx@nt-rt.ru