

# Bourdon tube pressure gauges // Industrial version // Types MRE and MRE-g



Type MRE-g

## Your advantages

Type	MRE / MRE-g
	<ul style="list-style-type: none"> <li>• Suitable for outdoor use - Closed system</li> <li>• Case complete stainless steel</li> <li>• Without electrical auxiliary power</li> </ul>

## Technical data

Type	MRE / MRE-g
Version	Bayonet ring case or crimped-on ring case
Nominal size	63 mm
Accuracy	EN 837-1, class 1.6 and class 2.5 (for display ranges 0...600 bar and 0...1000 bar)
Medium / Application	Liquid and gaseous media
Process connection	Thread see table , brass, optional stainless steel
Measurement system	Bourdon spring bronze, optional stainless steel
Degree of protection according to EN 60529	IP54 (IP65 for filled cases with closed pressure compensation insert)
Ambient temperature	-40 to 60 °C [-20 to 60 °C with case filling]
Storage temperature	-40 to 70 °C [-20 to 70 °C with case filling]
Medium temperature	Devices with brass connection max. 60 °C Devices with stainless steel connection max. 200 °C (max. 100 °C with case filling)
Nominal use temperature	20 °C*
Pressure load capacity	Of full-scale value
→ Resting load	75 %
→ Dynamic load	65 %
→ Overload	Max.
<b>Approvals</b>	

Архангельск (8182)63-90-72  
Астана (7172)727-132  
Астрахань (8512)99-46-04  
Барнаул (3852)73-04-60  
Белгород (4722)40-23-64  
Брянск (4832)59-03-52  
Владивосток (423)249-28-31  
Волгоград (844)278-03-48  
Вологда (8172)26-41-59  
Воронеж (473)204-51-73  
Екатеринбург (343)384-55-89  
Иваново (4932)77-34-06

Ижевск (3412)26-03-58  
Иркутск (395)279-98-46  
Казань (843)206-01-48  
Калининград (4012)72-03-81  
Калуга (4842)92-23-67  
Кемерово (3842)65-04-62  
Киров (8332)68-02-04  
Краснодар (861)203-40-90  
Красноярск (391)204-63-61  
Курск (4712)77-13-04  
Липецк (4742)52-20-81  
Киргизия (996)312-96-26-47

Магнитогорск (3519)55-03-13  
Москва (495)268-04-70  
Мурманск (8152)59-64-93  
Набережные Челны (8552)20-53-41  
Нижний Новгород (831)429-08-12  
Новокузнецк (3843)20-46-81  
Новосибирск (383)227-86-73  
Омск (3812)21-46-40  
Орел (4862)44-53-42  
Оренбург (3532)37-68-04  
Пенза (8412)22-31-16  
Казахстан (772)734-952-31

Пермь (342)205-81-47  
Ростов-на-Дону (863)308-18-15  
Рязань (4912)46-61-64  
Самара (846)206-03-16  
Санкт-Петербург (812)309-46-40  
Саратов (845)249-38-78  
Севастополь (8692)22-31-93  
Симферополь (3652)67-13-56  
Смоленск (4812)29-41-54  
Сочи (862)225-72-31  
Ставрополь (8652)20-65-13  
Таджикистан (992)427-82-92-69

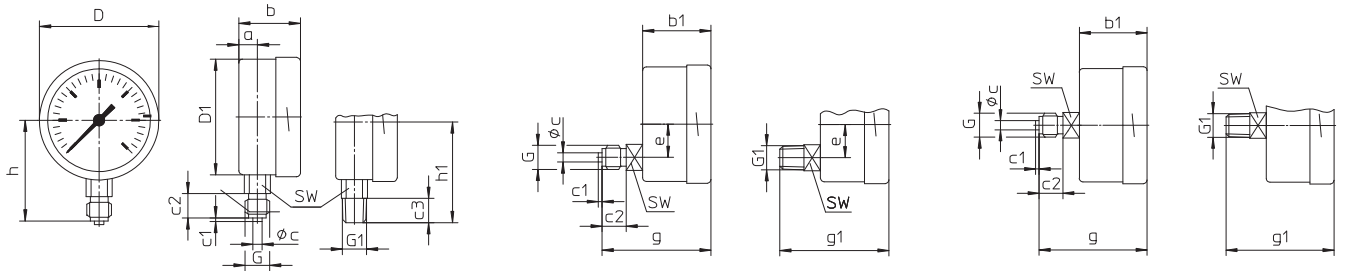
Сургут (3462)77-98-35  
Тверь (4822)63-31-35  
Томск (3822)98-41-53  
Тула (4872)74-02-29  
Тюмень (3452)66-21-18  
Ульяновск (8422)24-23-59  
Уфа (347)229-48-12  
Хабаровск (4212)92-98-04  
Челябинск (351)202-03-61  
Череповец (8202)49-02-64  
Ярославль (4852)69-52-93

<https://sika.nt-rt.ru/> || [skx@nt-rt.ru](mailto:skx@nt-rt.ru)

# Types and dimensions - bayonet ring case

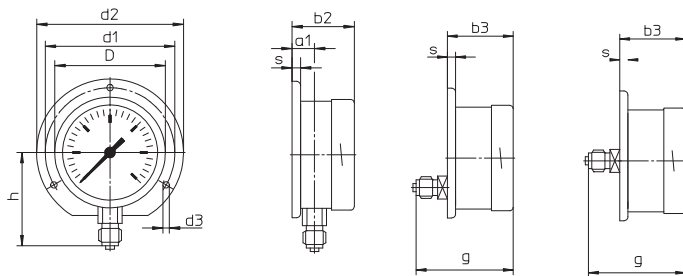
## Without mounting flange

Bottom connection, lower back connection or central back connection



## With rear flange

Bottom connection, lower back connection\* or central back connection\*

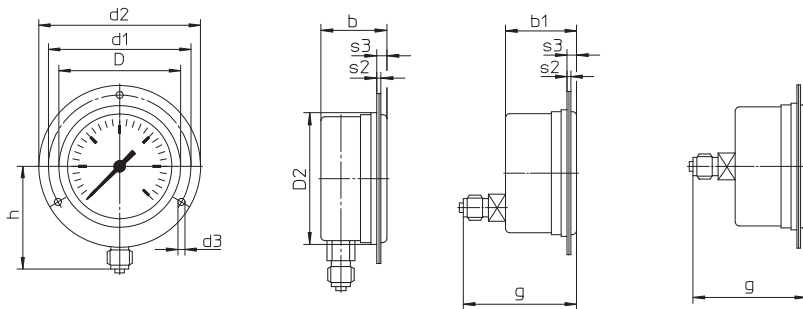


\* Versions available on request, but not recommended by EN 837-1.

\*\* Front flange with oval holes and separate trim ring, recommended panel cut out  $\varnothing 67 \pm 0.3$  mm

## With front flange\*\*

Bottom connection\*, lower back connection or central back connection



### Dimensions [mm]

NS	D	D1	D2	a	a1	b	b1	b2	b3	c	c1	c2	c3	d1	d2
63	64	62	66	10	13	33	37	36	40	5	2	13	13	75	85

### Dimensions [mm]

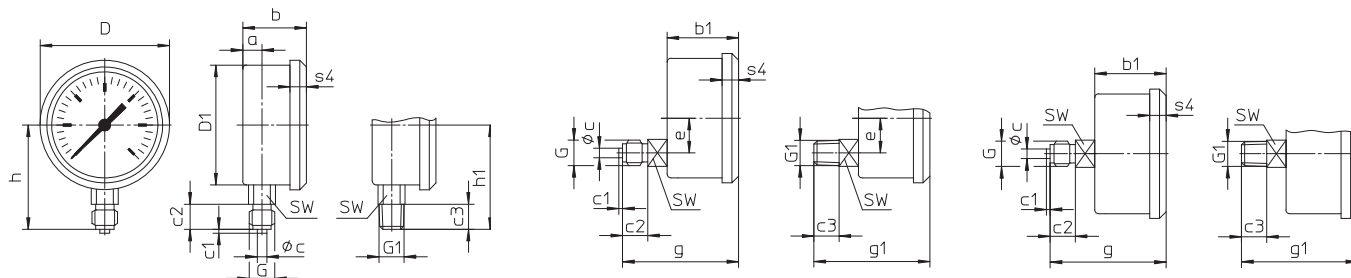
NS	Dimensions [mm]												Weight [kg] (approx.)*	
	d3	e	G	G1	g	g1	h	h1	s	s2	s3	SW	unfilled	filled
63	3.6	18	G $\frac{1}{4}$ B M12 x 1.5	$\frac{1}{4}$ NPT	59	59	54	54	5	2	5.5	14	0.18	0.25

\* Data applies to versions without mounting flange

# Types and dimensions – crimped-on ring case

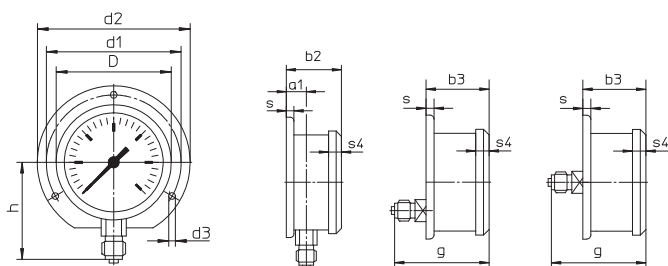
## Without mounting flange

Bottom connection, lower back connection or central back connection



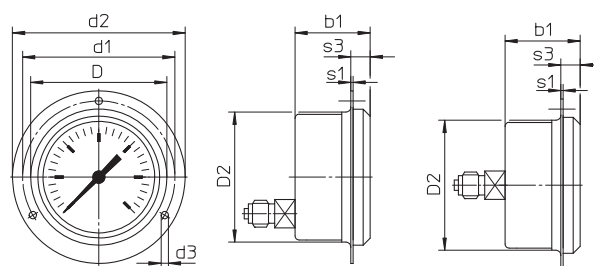
## With rear flange

Bottom connection, lower back connection\* or central back\* connection



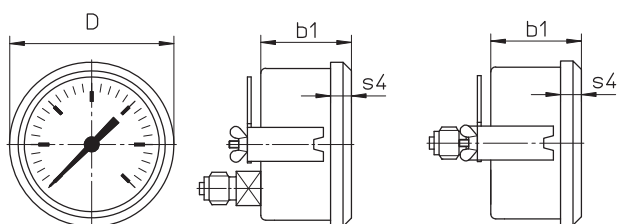
## With front flange\*\*

Lower back connection or central back connection



## With u-clamp\*\*\*

Lower back connection or central back connection



\* Versions available on request, but not recommended by EN 837-1

\*\* Recommended panel cut out  $\varnothing 67 \pm 0.3$  mm

\*\*\* Recommended panel cut out  $\varnothing 64 \pm 0.3$  mm

### Dimensions [mm]

NS	D	D1	D2	a	a1	b	b1	b2	b3	c	c1	c2	c3	d1	d2
63	67	62	64	10	13	33	37	36	40	5	2	13	13	75	85

### Dimensions [mm]

NS	d3	e	G	G1	g	g1	h <sup>±1</sup>	h1 <sup>±1</sup>	s	s1	s3	s4	SW	Weight [kg] (approx.)*	
														unfilled	filled
63	3.6	18	G $\frac{1}{4}$ B M12 x 1.5	$\frac{1}{4}$ NPT	60	60	54	54	5	1	9.5	8.5	14	0.18	0.25

\* Data applies to versions without mounting flange

Order code						
<b>Bourdon tube pressure gauges, industrial version</b>						
Bayonet ring case	MRE					
Crimped-on ring case	MREG					
<b>Nominal size</b>						
63 mm	1					
<b>Connection thread</b>						
G¼ B bottom	1					
G¼ B lower back connection	2					
G¼ B central back connection	5					
¼ NPT bottom	M					
¼ NPT lower back connection	N					
¼ NPT central back connection	S					
M12 x 1.5 bottom	3					
M12 x 1.5 lower back connection	4					
M12 x 1.5 central back connection	6					
<b>Connection material</b>						
Brass				1		
Stainless steel				3		
<b>Display ranges</b>						
-1...0 bar					315	
-1...0.6 bar					505	
-1...1.5 bar					515	
-1...3 bar					525	
-1...5 bar					535	
-1...9 bar					545	
-1...15 bar					555	
0...0.6 bar					015	
0...1 bar					025	
0...1.6 bar					035	
0...2.5 bar					045	
0...4 bar					055	
0...6 bar					065	
0...10 bar					075	
0...16 bar					085	
0...25 bar					095	
0...40 bar					105	
0...60 bar					115	
0...100 bar					125	
0...160 bar					135	
0...250 bar					145	
0...400 bar					155	
0...600 bar					165	
0...1000 bar					175	
						only with crimped-on ring case (connection material stainless steel)
<b>Mounting flange</b>						
None						0
Rear flange						1
Front flange						2
U-clamp						3
						only with crimped-on ring case
<b>Options</b>						
None						0
<b>Filled case</b>						
Unfilled case						0
Filled case (glycerine)						G
<b>Example order number</b>	<b>MRE</b>	<b>1</b>	<b>1</b>	<b>1</b>	<b>315</b>	<b>0 0 0</b>

Архангельск (8182)63-90-72  
Астана (7172)727-132  
Астрахань (8512)99-46-04  
Барнаул (3852)73-04-60  
Белгород (4722)40-23-64  
Брянск (4832)59-03-52  
Владивосток (423)249-28-31  
Волгоград (844)278-03-48  
Вологда (8172)26-41-59  
Воронеж (473)204-51-73  
Екатеринбург (343)384-55-89  
Иваново (4932)77-34-06

Ижевск (3412)26-03-58  
Иркутск (395)279-98-46  
Казань (843)206-01-48  
Калининград (4012)72-03-81  
Калуга (4842)92-23-67  
Кемерово (3842)65-04-62  
Киров (8332)68-02-04  
Краснодар (861)203-40-90  
Красноярск (391)204-63-61  
Курск (4712)77-13-04  
Липецк (4742)52-20-81  
Киргизия (996)312-96-26-47

Магнитогорск (3519)55-03-13  
Москва (495)268-04-70  
Мурманск (8152)59-64-93  
Набережные Челны (8552)20-53-41  
Нижний Новгород (831)429-08-12  
Новокузнецк (3843)20-46-81  
Новосибирск (383)227-86-73  
Омск (3812)21-46-40  
Орел (4862)44-53-42  
Оренбург (3532)37-68-04  
Пенза (8412)22-31-16  
Казахстан (772)734-952-31

Пермь (342)205-81-47  
Ростов-на-Дону (863)308-18-15  
Рязань (4912)46-61-64  
Самара (846)206-03-16  
Санкт-Петербург (812)309-46-40  
Саратов (845)249-38-78  
Севастополь (8692)22-31-93  
Симферополь (3652)67-13-56  
Смоленск (4812)29-41-54  
Сочи (862)225-72-31  
Ставрополь (8652)20-65-13  
Таджикистан (992)427-82-92-69

Сургут (3462)77-98-35  
Тверь (4822)63-31-35  
Томск (3822)98-41-53  
Тула (4872)74-02-29  
Тюмень (3452)66-21-18  
Ульяновск (8422)24-23-59  
Уфа (347)229-48-12  
Хабаровск (4212)92-98-04  
Челябинск (351)202-03-61  
Череповец (8202)49-02-64  
Ярославль (4852)69-52-93

<https://sika.nt-rt.ru/> || [skx@nt-rt.ru](mailto:skx@nt-rt.ru)